



ProFab
network

production planning
and data acquisition

How To Network Your Knitting Machines: The Smart Software Solution

ProFab designmanager

Transfer of design pattern and article data

ProFab machinemanager

Logging and evaluation of production data

ProFab jobmanager

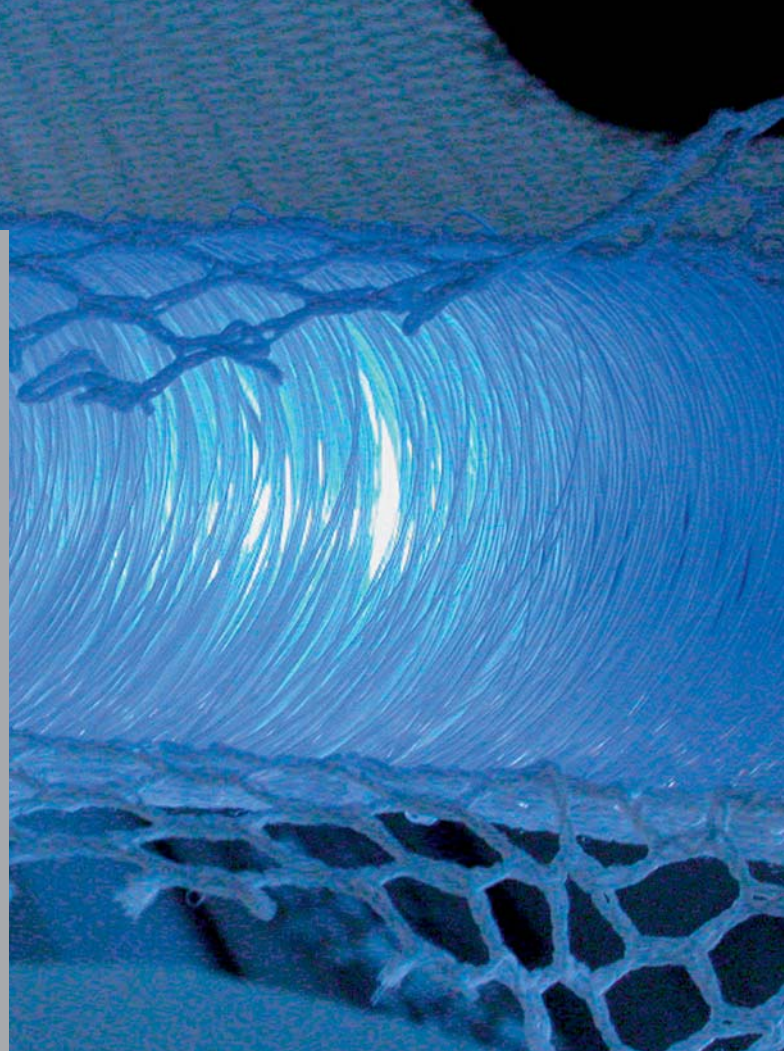
Production job planning

TEXION
Software Solutions

In the textile industry, productivity has been greatly stepped up in recent years (with a 44% increase in the last ten years alone!). In parallel, manpower levels in textile manufacturing have been cut by 38%. This trend is sure to be intensified in the future. Knitting manufacturers thus need to face the reality of three future challenges:

- To satisfy the highest quality and design standards
- To meet intense price competition by maximizing efficiency
- To achieve fast production across different locations

IT solutions for process automation backed by a highly-skilled workforce are already being implemented to meet these challenges. Network interfaces are already implemented in all state-of-the-art machines currently supplied by Karl Mayer Textilmaschinenfabrik GmbH, the global market leader. In taking this direction, Karl Mayer is pointing the way forward for the future of knitwear production.



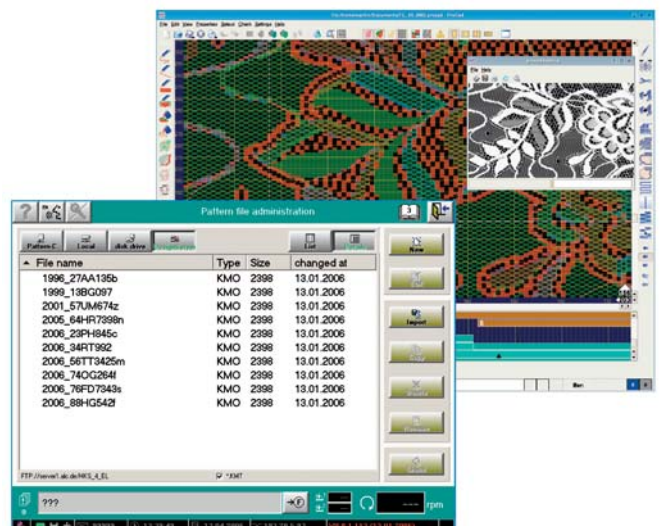
Automated Production Management via ProFab

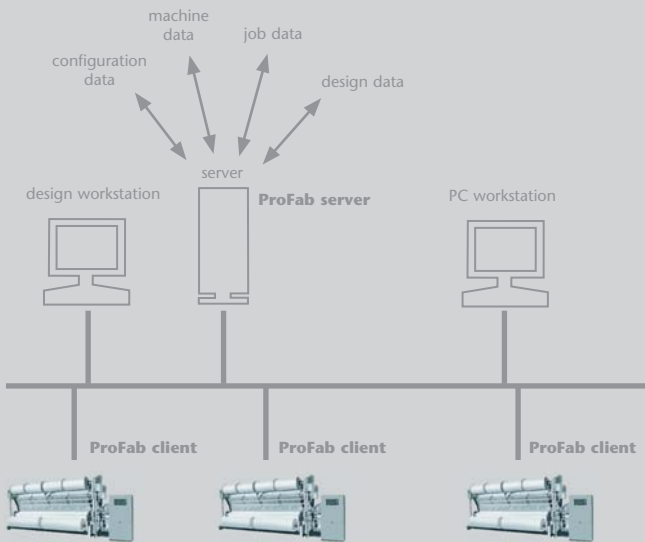
Workflow networking in office communication has long become standard. But this is still new ground in certain parts of the textile industry. Network communication interfaces for state-of-the-art knitting machines will lay the foundation, with intelligent management software the big step forward.

With ProFab network, the software tool provided by TEXION, knitwear manufacturers can achieve a level of automation which provides enormous potential in terms of competitive edge. ProFab is modular software and comprises three modules.

ProFab designmanager

ProFab designmanager enables the management and archiving of all design patterns from a central database. This ensures that design patterns are protected against misuse or damage, revisions handled automatically and administration greatly simplified. Design pattern data can be directly transferred from atelier to machine, thus achieving a radical acceleration in loading times!





Configurability

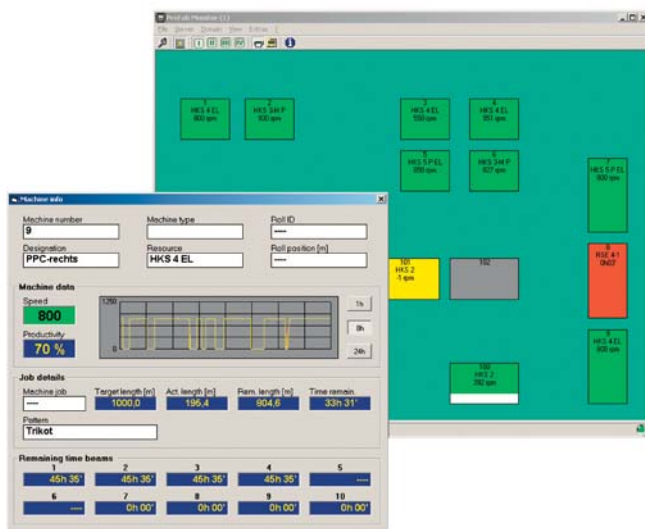
ProFab is adaptable to the scenarios of individual companies. Before production starts all parameters relevant to the production process (machine fitting, shopfloor layouts) are logged. All functional software modules are configured to customers' applications. This can also be executed while production is ongoing.

Security of Investment: Flexibility

The open structure of ProFab network means that extensions to system functionality can be implemented without impacting other components. This ensures security of investment for ProFab network. We will be happy to give you a presentation about how you can benefit from ProFab jobmanager and other featured modules.

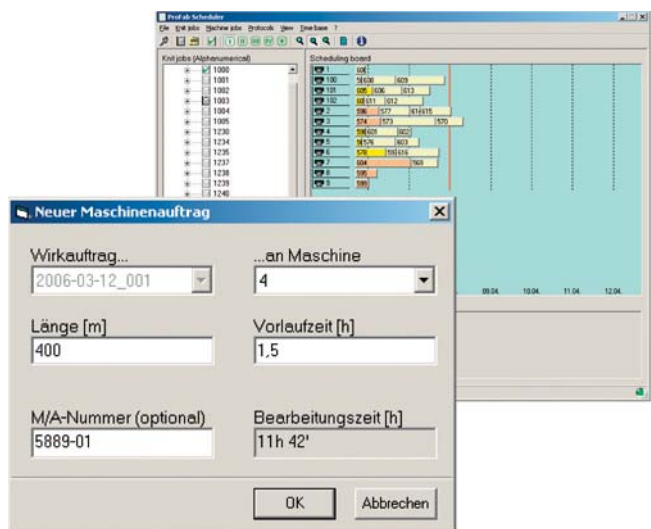
ProFab machinemanager

ProFab machinemanager is the all-round tool able to provide an analysis of production data, delivering detailed protocols per shift, day and machine. Changing events are highlighted as they happen according to such criteria as efficiency, machine utilization levels, average RPM, standstill, and error frequency. Design patterns or machines liable to error are identified, with ProFab jobmanager ensuring the elimination of faults.



ProFab jobmanager

ProFab jobmanager is the tool for automating your knitting production planning. ProFab jobmanager administers and tracks production jobs, supports production planning and the monitoring of manufacturing deadlines. This provides an important benefit when planning for large fleets of machines.





ProFab network

production planning
and data acquisition

ProFab designmanager

- Direct transfer of design pattern data from atelier to machine (time-saving and security benefit)
- Design patterns fully protected against misuse (security benefit)
- Secure versioning of pattern designs (quality benefit)

ProFab machinemanager

- Overview of the status of all machines
- Detailed data relating to each machine
- Straightforward call-up of protocols and listings
- Key data (average RPM, productivity) available at any time
- Graphic display of RPM curves (monitor)
- Analysis of reasons for standstills (cause, time, remarks)

ProFab jobmanager

- Interface to all standard production planning systems
- Administration, planning and tracking of all production jobs
- Job progressing and production deadline monitoring
- Planning maximum machine productivity
- Quality control via detailed protocols

www.Drei-K.de Photo: Jean-Luc Valentin

TEXION
Software Solutions

TEXION Software Solutions
Rotter Bruch 26a
52068 Aachen, Germany
Phone +49 241-475757-0
Fax +49 241-475757-29
info@texion.eu
www.texion.eu